

A VISION
AHEAD



HOW TO READ THE PRODUCT KEY

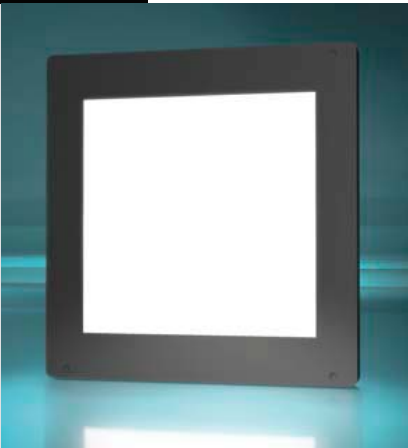
Manufacturer	Source colour	Light Output Area/Length	Injection process	Input voltage
PHLOX	- LEDW	- BL 100x100	- HSCAT	- Q - 1R - 24V
Source type	Product type	Range	Number of light sources' rows per cicu	

PHLOX® EXCLUSIVE LIGHT PROCESS
WORLDWIDE PATENT ISSUED

NEW!

HSCAT (High Speed Camera) White led Backlight 100x100

PHLOX - LEDW - BL - 100x100 - HSCAT - Q - 1R - 24V



Illumination

Luminance minimum	≥130 000 cd/m² continuous mode
Uniformity minimum	≥95% (+/- 10%)
Source Type	White LED
Colour Temperature	5700°K (+/-500)
Light Angular Distribution	30° 1/2 angle (less stray light)
Expected Life	> 20 000 hours

Electrical

Input Voltage	24 VDC (continuous mode)
Input Current	≤2.2 A (continuous mode)
Cable length	3.7 M (±0.1m)– (12.14 ft ±0.33) including power supply
Connector	XLR3 male on backlight/ XLR3 female on power supply See picture on the left
Cable pinout	Yes
CE Conformity	Yes
Strobe mode	Max. Cur: 14A / Pulse Width: 10ms / Duty Ratio: 1/10
Power supply (included)	MeanWell 24V, 2.5A (GST60A24-P1J)*

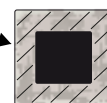
Outer unit

L x W x H	234.4 x 182 x 33 mm (9.23 x 7.16 x 1.30")
Housing Material	Black Anodized Aluminium
Weight backlight	860 g (30.3 oz)

Environmental

Max. Operating Humidity	95% non-condensing
Operating Temperature	40°C (104°F) max
Storage Temperature	50°C (122°F) max
Shelf life	12 months from date of purchase
Max.temp.on housing	110°C (+230°F) max

30mm all along the edges of the back of the black anodized aluminium housing (see image)



Do not cover the backlight when it's switched on.

Accessories

LED Dimmer : 28V-5A very compact and easy to use
Product key: PHLOX DIM LIGHT



LED Strober 48V - 5A (up to 40A in pulse mode)
Pulse width between 2µs and 10ms
Product key: PHLOX STROBE LIGHT



DESIGNED FOR YOUR APPLICATION

Shadowgraphy, Particle analysis, Ballistics, Spray analysis (water, paint, fuel, etc...)
Droplet impactation, Bubble formation, Powder, solid particles, Emulsions and dispersions
Welding, Liquid interface

RoHS directive compliant

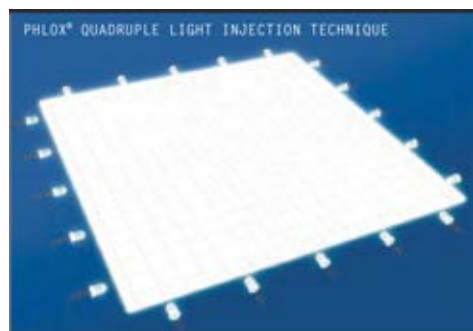
CLASS 0: NO RISK (CIE S2009:2002/NF EN 62471)

Each PHLOX Backlight is provided with:

- 24 months warranty
- Certificate of uniformity and luminance
- Seal of quality on the back

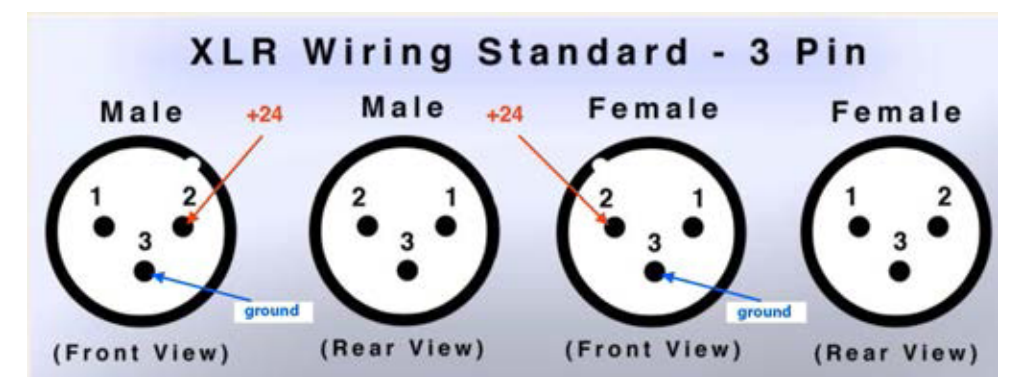
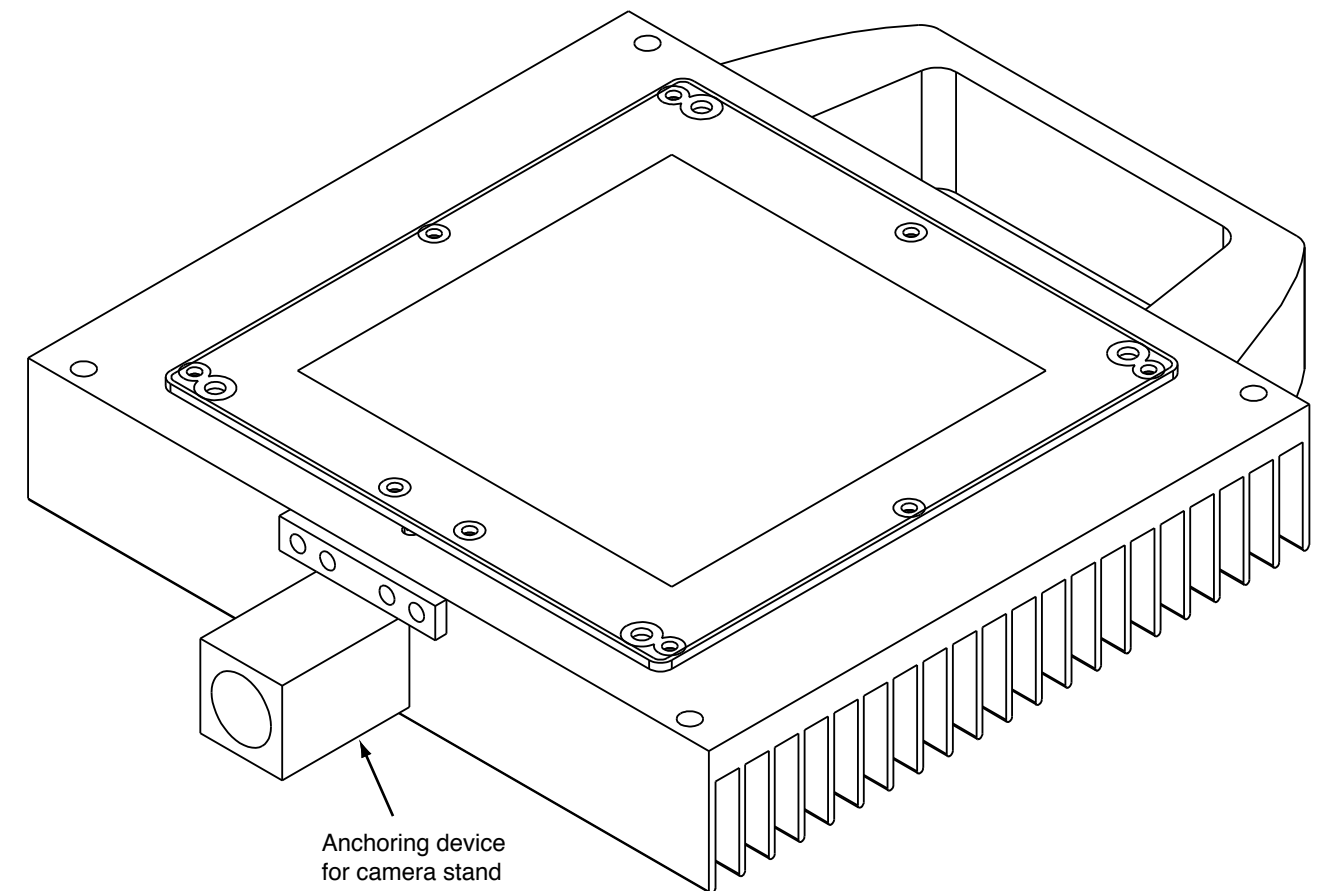
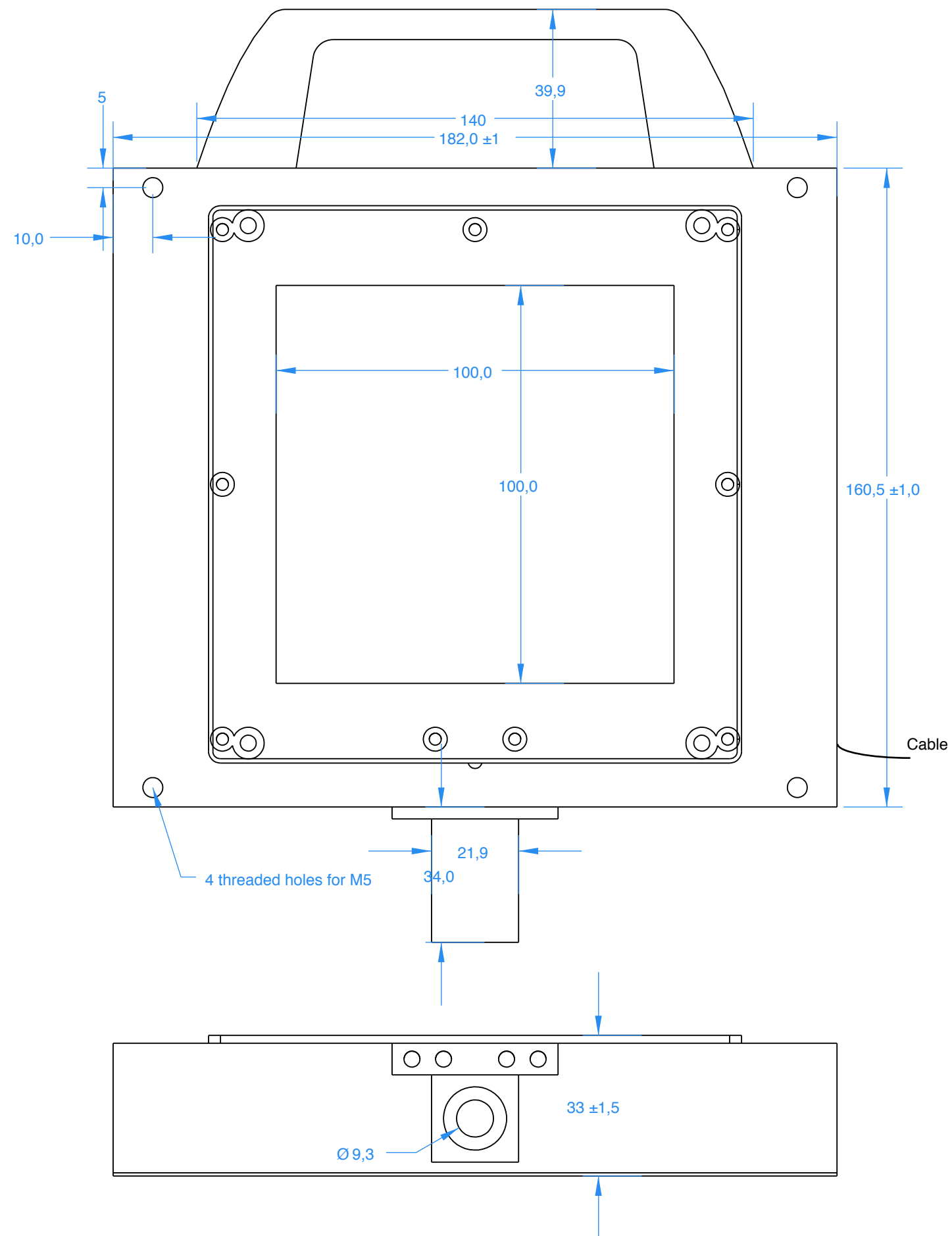
June 20 2018


HSC Backlights by PHLOX®, designed for the Phantom®High Speed Camera offer the best luminance on the market.



INNOVATION

PHLOX® uses optical processes: a PMMA pipe lighted by a linear source made up of LED (Light Emitting Diodes). Our manufacturing process (CO2 laser) enables us to combine refraction and diffusion which improves backlight luminance. Up to 90% of the light injected can be reemitted on the surface. Thanks to the use of mathematical models, PHLOX® emits light in a determinist and perfectly controlled manner



PROPRIÉTÉ DE PHLOX SA- REPRODUCTION INTERDITE SAUF ACCORD ÉCRIT	
PHLOX-LEDW-BL-100X100-HSCAT-Q-1R-24V	
TEL: +33 (0) 4 42 90 76 20	