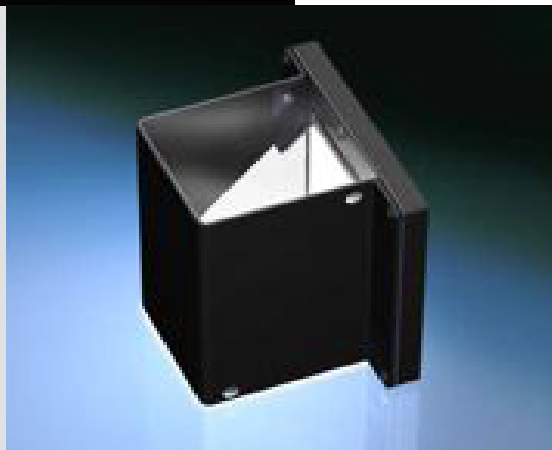


A VISION
AHEAD



HOW TO READ THE PRODUCT KEY

Manufacturer	Source colour	Light Output Area/Length	Injection process	Input voltage
PHLOX	- LEDRGB	- OA - 50x50	- S - Q	- 1R - 24V
Source type	Product type	Range	Number of light sources' rows per cicu	

PHLOX® EXCLUSIVE LIGHT PROCESS
WORLDWIDE PATENT ISSUED

High Uniformity RGB led On-Axis 50x50

PHLOX - LEDRGB - OA - 50x50 - S - Q - 1R - 24V

Illumination

Luminance minimum
Uniformity minimum
Source Type
Wavelength
Expected Life

R: 320; G: 620; B: 60; W: 1000 cd/m² continuous mode
≥80% (+/- 10%)
RGB LED
Red: 630; Green: 520; Blue: 460 nm
50 000 hours

Electrical

Input Voltage
Input Current
Cable length
Connector
Cable pinout
CE Conformity
Strobe mode

24 VDC (continuous mode)
Red: 100; Green: 100; Blue: 40; W: 240mA (continuous mode)
2 M (PTFE color)
None
White: 24VDC; Red, Green, Blue: ground
Yes
Max. Cur: Red: 0.4; Green: 0.4; Blue: 0.16; White: 0.96 A
Pulse Width: 10ms / Duty Ratio: 1/10

Outer unit

L x W x H
Housing Material
Weight
Mounting

90 x 85 x 64.5 mm (3.54 x 3.35 x 2.54")
Black Anodized Aluminium
220 g (7.76 oz)
4 mounting holes D 4 mm (0.157")

The RGB led On-Axis by PHLOX® offer the **best uniformity on the market.**

PHLOX® is the only manufacturer to provide a 3D uniformity and luminance certificate with every backlight. This data is also available on the quality control seal positioned at the back of every backlight.

DESIGNED FOR YOUR APPLICATION

Bottle inspection (glass and plastic)
Particle measurement
Picture digitalization
Dimensional control
Shaping control
Quality control with transparency.

& YOUR INDUSTRIAL SECTOR

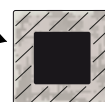
Glassmaking
Pharmaceutical/Cosmetics
Automotive
Agribusiness
Electronics
Aeronautics and space.

Environmental

Max. Operating Humidity
Operating Temperature
Storage Temperature
Shelf life
Max. temp. on housing

95% non-condensing
50°C (122°F) max
60°C (140°F) max
12 months from date of purchase
+80°C (+176°F)

area of temperature measurement
30mm all along the edges of the back of
the black anodized aluminium housing
(see image)



Do not cover the backlight when it's switched on.

Accessories

LED Dimmer: 28V-5A very compact and easy to use
Product key: PHLOX DIM LIGHT

Power supply: 110V and 220V
Product key: ALIM-24V-2.5A60WEU or ALIM-24V-2.5A60WUS

LED Strober: 28V - 5A (up to 40A in pulse mode)
Pulse width between 2µs and 10ms
Product key: PHLOX STROBE LIGHT

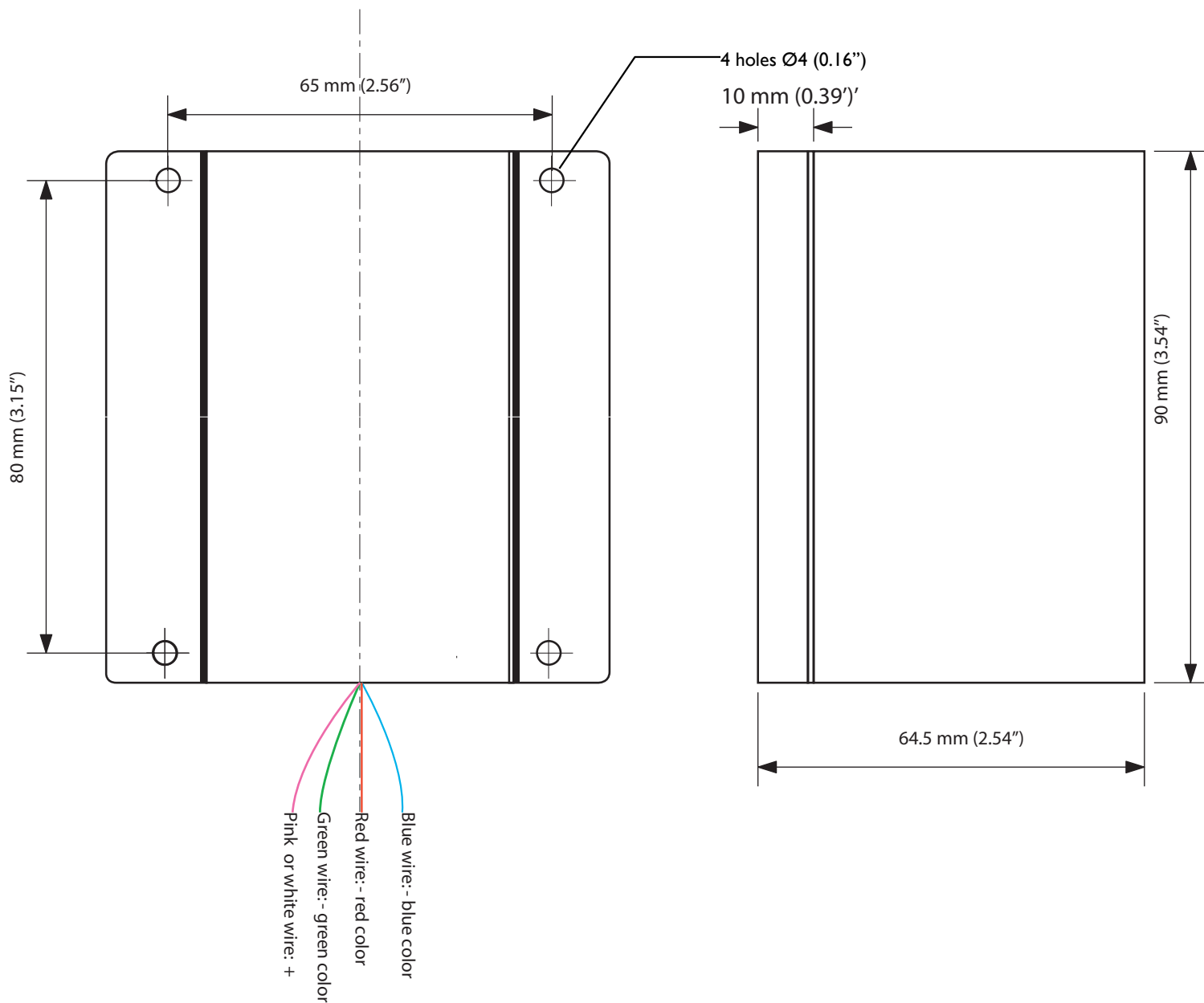


CLASS 0: NO RISK (CIE S2009:2002/NF EN 62471)

RoHS directive compliant

Each PHLOX Backlight is provided with:
- 24 months warranty
- Certificate of uniformity and luminance
- Seal of quality on the back

July 19, 2017



PROPRIÉTÉ DE PHLOX SA- REPRODUCTION INTERDITE SAUF ACCORD ÉCRIT

PHLOX-LEDRGB-OA-50X50-S-Q-1R-24V

TEL: 04 42 90 76 20
FAX: 04 42 90 76 21

